

COPING WITH FLAT DRIP

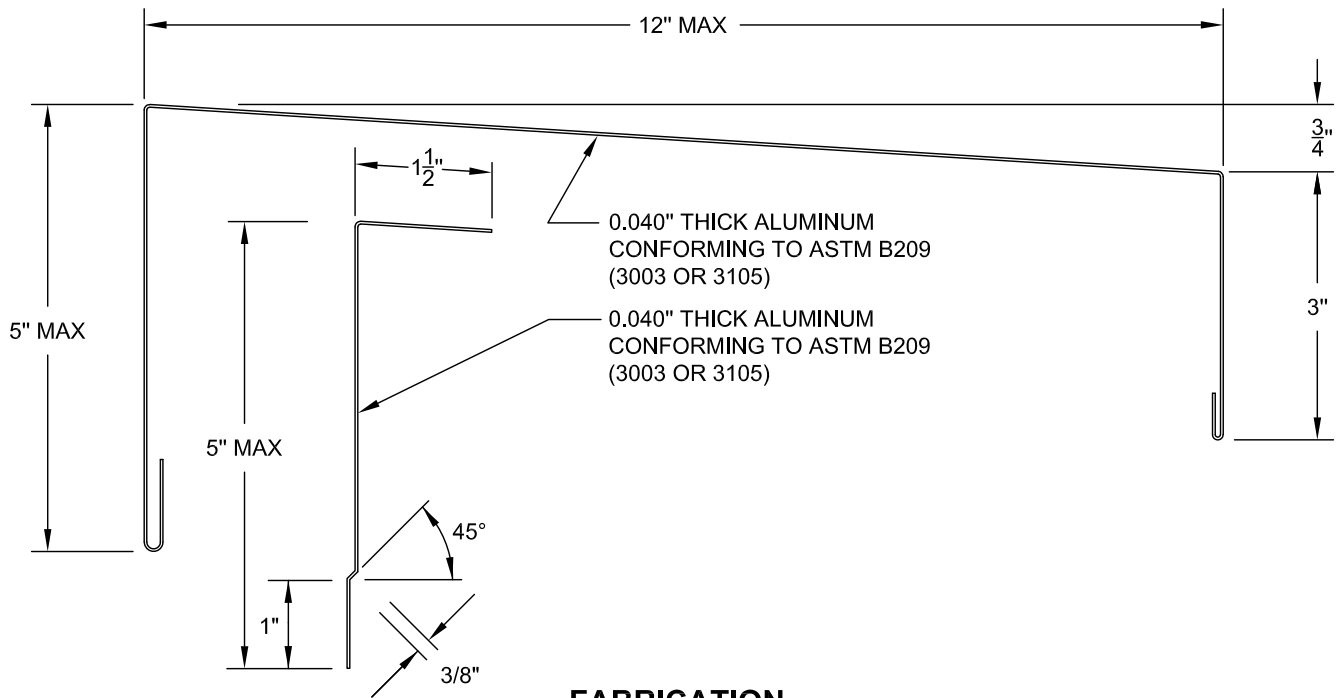
- 0.040" ALUMINUM
- 0.040" ALUMINUM CLEAT
- CONTINUOUS FRONT FACE CLEAT AND GASKETED BACK FACE FASTENER

**ANSI/SPRI ES-1
TESTED RESISTANCE**

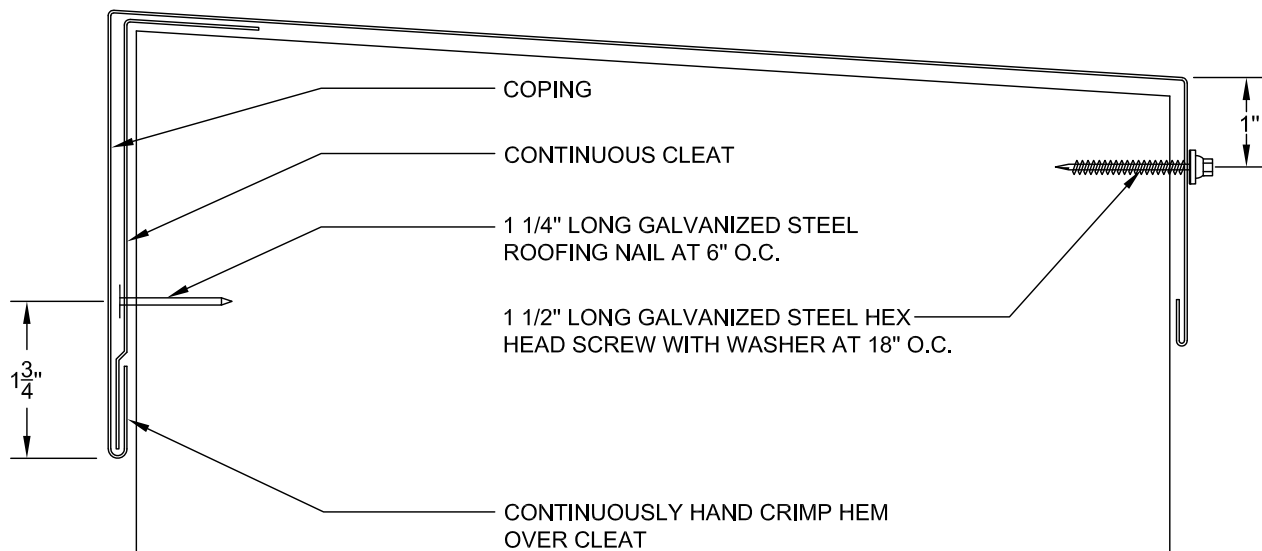
OUTWARD UPWARD
225 LBS./SQ. FT. 400 LBS./SQ. FT.

UL-15A

2/6/17



FABRICATION



INSTALLATION

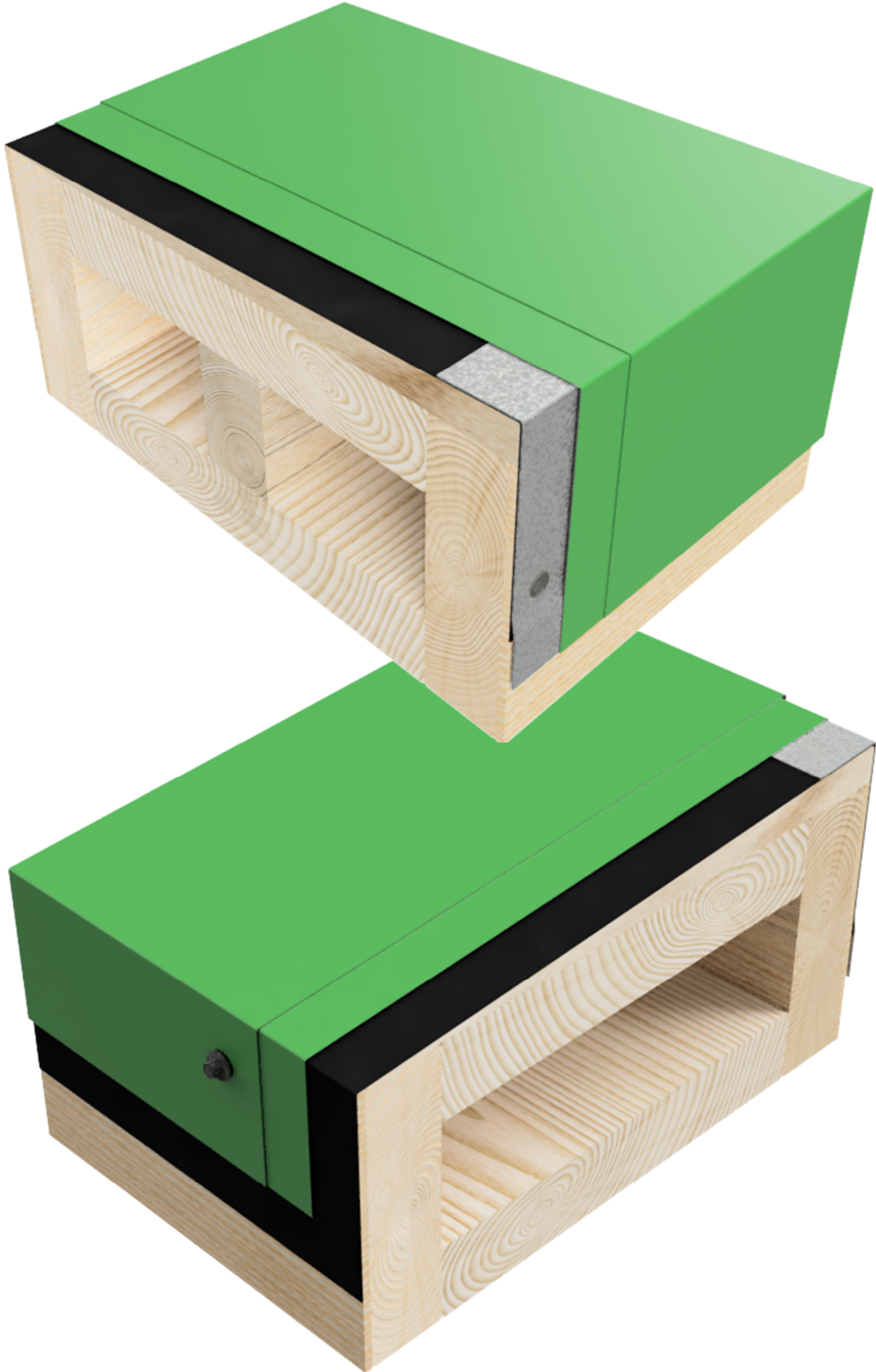


1515 Lake Wheeler Rd
Raleigh NC 27603
919-256-2270



NATIONAL ROOFING CONTRACTORS ASSOCIATION

THE NRCA ROOFING MANUAL CONSTRUCTION DETAIL C-7	COPING <ul style="list-style-type: none"> • .040" ALUMINUM • .040 ALUMINUM CLEAT • CONTINOUS FRONT FACE CLEAT AND GASKETED BACK FACE FASTENER 	ANSI/EPRI ES-1 TESTED RESISTANCE		UL-15A 2/6/17
		OUTWARD 225 LBS./SQ. FT.	UPWARD 400 LBS./SQ. FT.	



Peak Metal Products is an Authorized
Fabricator of ANSI/SPRI ES-1 UL
Approved Edge Metal Products

Always Good Work

Peak Metal is a Division of
Baker Roofing Company

